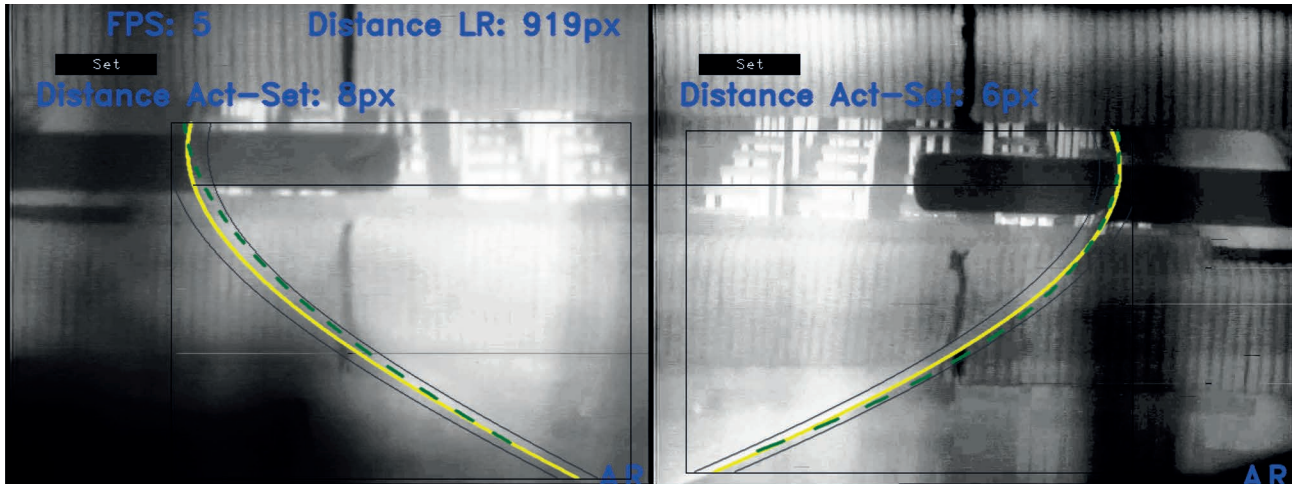
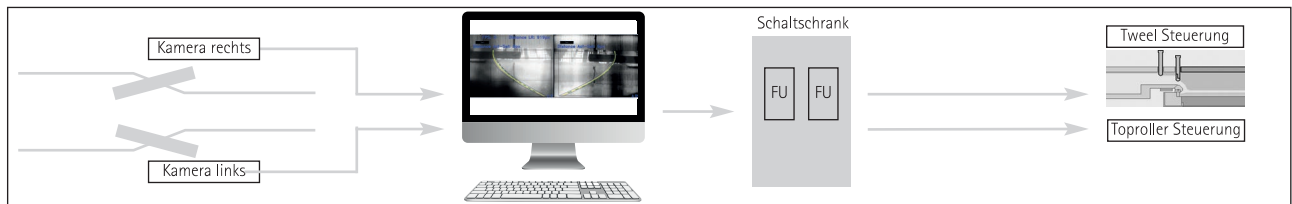


Methode

- Erkennung der Glaskontur (2 Kameras l/r in 1 System)
- Erkennung der Abweichung von der Sollkontur
- Automatische Regelung der Tweel-Position und der ersten aktiven Toproll-Maschine



Erkennung der Glaskontur



Top Roller
Cooler / Camera
Parameter
Float 3
Messages
System info

Date	Time	Tag name	Message text	Status	Acknowledgment
27/01/16	10:56:32	ST421168_WL	Toproller 01L Rotation Speed value : Low warning	I	A
27/01/16	10:56:32	ST421168_WL	Toproller 01R Rotation Speed value : Low warning	I	A

Float - Top Roller Control

TR #01L	TR #02L	TR #03L	TR #04L	TR #05L	TR #06L	TR #07L	TR #08L	TR #09L	Speed SP	Speed PV	Penetration	Angle	Pressure
6.00 m/min	5.00 m/min	4.96 m/min	10.00 m/min	10.00 m/min	10.00 m/min	30.00 m/min	10.00 m/min	10.00 m/min	0.00 m/min	0.00 m/min	0.00 m/min	40.00 grd	30.00 mm
599 mm	26 mm	26 mm	26 mm	26 mm	26 mm	26 mm	26 mm	26 mm					
-0.44 grd	40.00 grd	40.00 grd	40.00 grd	40.00 grd	40.00 grd	40.00 grd	40.00 grd	40.00 grd					
54.60 mm	30.00 mm	30.00 mm	30.00 mm	30.00 mm	30.00 mm	30.00 mm	30.00 mm	30.00 mm					
31.9 °C	29.8 °C	31.6 °C	31.0 °C	31.4 °C	31.7 °C	32.2 °C	31.0 °C	31.4 °C	31.7 °C	32.2 °C	31.0 °C	31.4 °C	32.1 °C

TR #01R	TR #02R	TR #03R	TR #04R	TR #05R	TR #06R	TR #07R	TR #08R	TR #09R	Speed SP	Speed PV	Penetration	Angle	Pressure
6.00 m/min	5.00 m/min	4.90 m/min	10.00 m/min	10.00 m/min	10.00 m/min	30.00 m/min	10.00 m/min	10.00 m/min	0.00 m/min	0.00 m/min	0.00 m/min	40.00 grd	30.00 mm
543 mm	26 mm	26 mm	26 mm	26 mm	26 mm	26 mm	26 mm	26 mm					
0.60 grd	40.00 grd	40.00 grd	40.00 grd	40.00 grd	40.00 grd	40.00 grd	40.00 grd	40.00 grd					
49.83 mm	30.00 mm	30.00 mm	30.00 mm	30.00 mm	30.00 mm	30.00 mm	30.00 mm	30.00 mm					
31.5 °C	28.4 °C	28.7 °C	30.00 °C	30.00 °C	28.6 °C	28.6 °C	29.9 °C	30.2 °C	30.5 °C	31.7 °C	31.6 °C		

Stirrer

129 grd | 127 grd

SP: 2.96 rpm

Left: 0.00 rpm

Right: 0.00 rpm

31.5 °C

Tweel

UP: 214.6 mm

DN: 86.3 mm

Top Roller Visualisierung im Leitsystem